

# APPLICATIONS KORTEX<sup>®</sup> PEC

Geocomposite **Kortex<sup>®</sup> PEC** (further only **GCO**) requires a correct usage and respect of basic procedures, so that there is no damage, or destruction of it before it begins to do its job on a construction site. The **GCO** or its function is most frequently damaged during installation and this is why it is necessary that there is no traffic rolling over the newly installed **GCO** and the following recommendations are respected.

Nonwoven geotextile contributes to the protection of reinforcing fibres from mechanical damage during installation. When the **GCO** is placed between fill layers with different granularity than it is recommended the **GCO** to orientate its nonwoven geotextile towards coarse granularity. It affords protection to reinforcing part of the **GCO** from damage.

## STORAGE AND HANDLING

- the rolls of the **GCO** are stored in a dry, clean and on even surface,
- the stack of **GCO** should not be more than five rolls high,
- the rolls should not be stored in crisscross fashion,
- the package is open only before the **GCO** immediate use.

All networks (gas, sewer, water etc.) must be constructed and finished before the **GCO** is laid, so that there would be no damage to the **GCO** layers.

## CLEANING THE SURFACE

The surface where the **GCO** will be laid, must be cleaned from items which could damage it by either tearing, or puncturing (sharp stones, tree branches, etc.).

## LEVELING THE SURFACE

Smooth any bumps in the surface with either bulldozer, or grader and fill any depressions with suitable fill material. The surface should be even of up to +/- 30mm.

## COMPACTING THE SURFACE

Min. D80% Proctor standard (according the local condition). To be compacted with vibration plate/ tamping roller to a density not allowing any ruts (or maximum 2-3 cm in depth) be made by trucks running onto the surface.

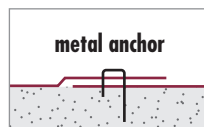
## LAYING DOWN AND SPREADING

Before starting the actual work, there has to be a prior plan to install the **GCO**. The placement and direction of how the **GCO** will be laid, must also be clearly determined within the construction design. The place where the **GCO** will be laid must be identified by stakes. The textile material must be evened out, stretched and anchored by "U" shaped steel clamps (further only "anchors") to remove any folds and waves to immediately start the interaction effect between the geotextile and the soil.

### Parallel overlapping of strips:

- in case of surfaces with adequate load-bearing capacity (CBR>3): overlap L = approx. 0,3 m
- soft, uneven surfaces (CBR<3): overlap L = approx. 0,5 to 1 m.

- The overlap procedure must be reverse to the procedure covering the surface with soil (fill).
- If there are not "U" shaped steel anchors, fix the overlap with small amount of soil approximately every 3 m.



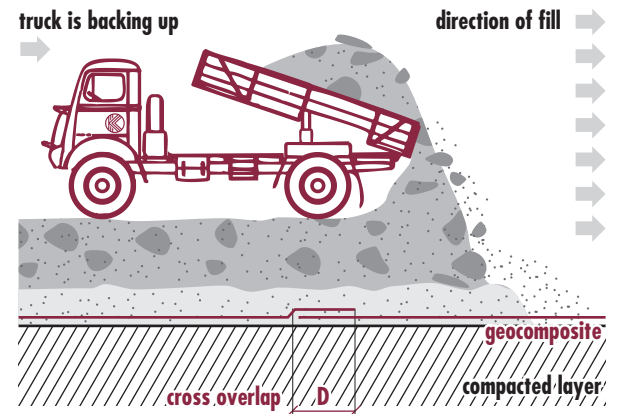
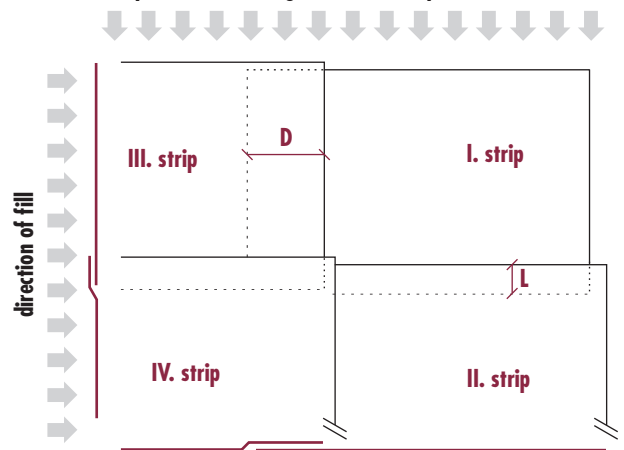
## INSTALLING IN A STRUCTURE

The geocomposite can be incorporated within the structure by **CAREFUL COVERING AND COMPACTING THE FILL**, in two ways:

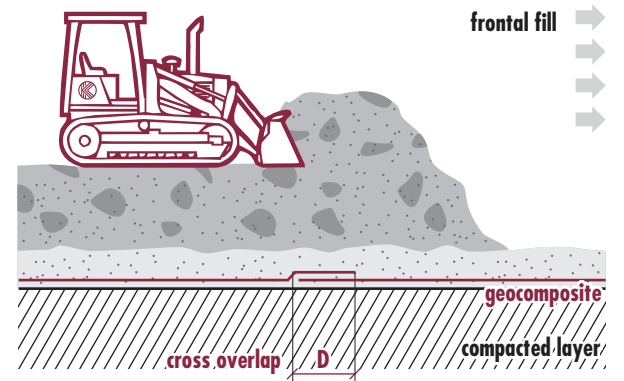
- **if the gravel size is up to 32 mm**  
this is usually covered by soil, which is the de-facto construction layer as per the project;
- **if the gravel is larger than 32 mm, too sharp, etc.**  
first you lay down a protective layer of a suitable soil of approximately 200 mm thickness.

The textile material is covered with soil in perpendicular direction of the lengthwise installation, in opposite direction as the installation of the **GCO** • in the course of covering there must not be any damage to the overlap, the grid must not have any waves in it • if it is being covered in the same direction as parallel overlapping, the covering soil must be spread in the direction "out of the site" • it is covered by only a so called frontal overlay • the trucks with soil are using an already used path.

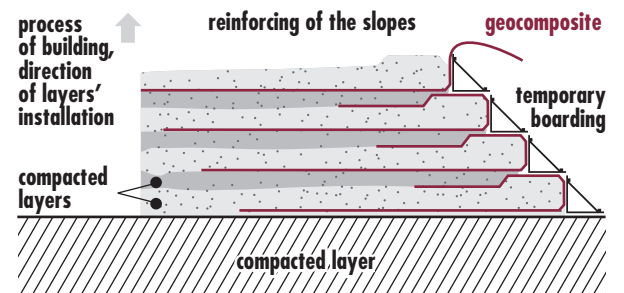
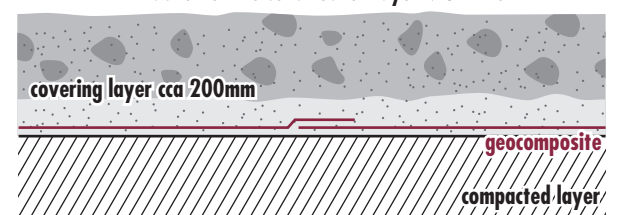
process of building, direction of layers' installation



**TRANSPORTATION VEHICLES MAY NOT TRAVEL OVER THE SURFACE OF THE SPREAD OUT GEOCOMPOSITE!**



if fraction of the construction layer  $f > 32\text{mm}$ :



**KORDÁRNA**  
A MEMBER OF THE KORD GROUP

DISTRIBUTOR

**KORDTRADE s.r.o.**  
Velká nad Veličkou 890  
696 74 Czech Republic  
Tel: +420 518 312 429  
+420 518 312 433  
Fax: +420 518 329 240  
E-mail: geo@kordarna.cz  
www.kordarna.cz