



Znojmo

shopping centre Interspar

country: Czech Republic

realization: 2004

material: Armatex® G 80/80

..... 20.000 m²

Armatex® G 55/55

..... 5.000 m²



ARMATEX® G

woven geogrid from high-strength PET with PVC adjustment for soil reinforcement

purpose of usage:

soil reinforcing because of low bearing – capacity of the ground



Since the construction is located on original ground which complied with the loading distribution precondition, the bearing skeleton structure was built first. Thereafter were measured values of the deformation modulus, which were $E_{def,1} = 15\text{MPa}$, $E_{def,2} = 51\text{MPa}$. The value required by the designer was $E_{def,2} = 65\text{MPa}$ for the floor structure, therefore it was subsequently decided to reinforce the construction.

Load-bearing layer structure:

- damp-proofing, industrial floor (steel-fibre-reinforced concrete)
- 50mm fine sand, fraction 0 – 4mm
- 300mm aggregates (macadam), fraction 0 – 63mm
- woven geogrid **Armatex® G 80/80**
- 300mm gravel, fraction 0 – 32mm
- woven geogrid **Armatex® G 80/80** laid down in crosswise direction
- 300mm aggregate, fraction 0 – 63mm

The top aggregates (macadam) layer (following compaction) was measured as being $E_{def,2} = 106\text{MPa}$. **Armatex® G 55/55** is designed as hardstand (pavements, car parks, etc.)

Note:

When earthwork was underway, skeleton relicts were found here from the period of Napoleonic wars.

Kordárna, a.s.

696 74 Velká nad Veličkou 890

Czech Republic

tel.: +420 518 312 400

+420 518 312 407

+420 518 312 433

fax: +420 518 329 240

email: sales@kordarna.cz

internet: www.kordarna.cz



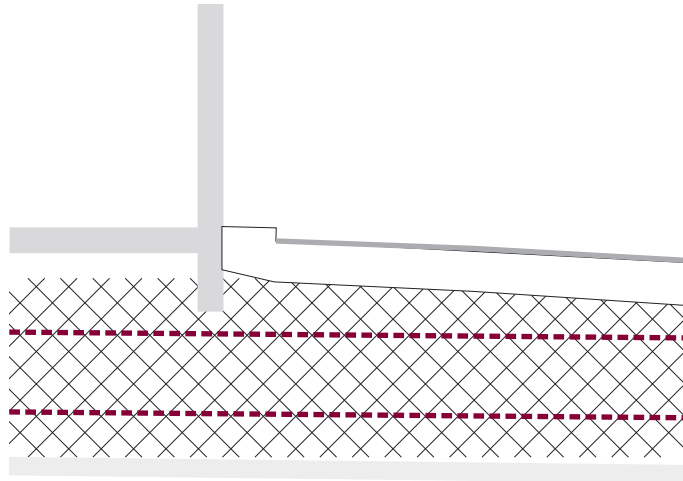
Factory Production Control Certificate 0799-CPD-19



KORDARNA

A MEMBER OF THE KORD GROUP

cross section:



damp-proofing, industrial floor
aggregates, fraction 0 – 63 mm

ARMATEX® G 80/80

gravel, fraction 0 – 32 mm

ARMATEX® G 80/80

aggregates, fraction 0 – 63 mm



composition of construction strata



view of skeleton



partial phase of construction



anchoring longitudinal overlap of geogrid with steel clasp



compact of aggregates strata



skeleton relicts

investor:

AUSTRIA INVEST, s.r.o.,

České Budějovice

designer:

ATELIER EIS, s.r.o.,

České Budějovice

contractor:

IMOS Brno, a.s., Brno

earth works

HOLCNER & spol. s r.o., Lysice

realization:

2004